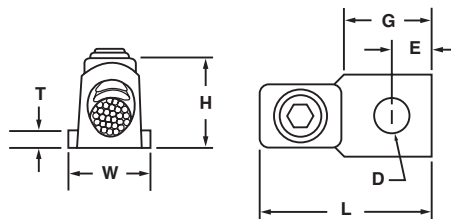


Bronze Vi-Tite Terminal Lugs - One Hole, Square Tongue Type VL

For use with one copper conductor

- Manufactured from high strength copper alloy for maximum conductivity and corrosion resistance
- Heavy duty terminals used for joining a wide range of copper conductors to equipment pads or bus bars
- Bronze screw and pressure bar provide uniform clamping pressure on conductor
- Annular serrations in conductor grooves provide improved mechanical performance
- Inspection hole allows for visual confirmation of proper cable insertion
- Hex head screws can be furnished on request by adding suffix “-HH” to catalog number*
- For tin plating, suffix catalog number with “-TN”



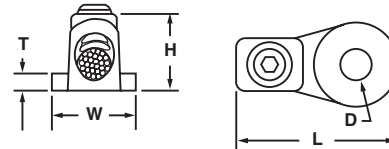
CATALOG NUMBER	CONDUCTOR RANGE	APPROXIMATE DIMENSIONS (IN.)							MTG. BOLT SIZE	HEX SIZE
		T	W	D (DIA.)	E	G	H	L		
VL-21683	4 Sol. - 1 Str.	.22	.63	.28	.38	.88	.88	1.69	1/4	3/16
VL-21685	2 Str. - 2/0 Str.	.25	.81	.41	.44	1.00	1.03	1.88	3/8	1/4
VL-21687	1/0 Str. - 4/0 Str.	.25	1.00	.41	.50	1.25	1.28	2.38	3/8	1/4
VL-21689	3/0 Str. - 300 kcmil	.31	.81	.53	.75	1.50	1.38	2.69	1/2	3/8
VL-21691	300 - 500 kcmil	.38	1.50	.69	.75	1.63	1.81	3.00	5/8	3/8
VL-21692		.38	1.38	.53	.88	1.88	1.81	3.13	1/2	3/8
VL-21694	500 - 800 kcmil	.41	1.75	.53	1.00	2.19	1.88	3.69	1/2	3/8
VL-21697	700 - 1000 kcmil	.44	2.00	.69	1.00	2.19	2.06	4.00	5/8	3/8
VL-21698		.44	2.00	.69	1.19	2.50	2.06	4.00	5/8	3/8
VL-21986	1000 - 1500 kcmil	.50	2.13	.81	1.06	2.13	2.31	4.75	3/4	1/2
VL-21987	1500 - 2000 kcmil	.56	2.50	.81	1.19	2.38	2.69	5.13	3/4	1/2

*Note: Catalog numbers with “-HH” suffix are not UL listed

Bronze Vi-Tite Terminal Lugs - One Hole, Round Tongue Type VL

For use with one copper conductor

- Manufactured from high strength copper alloy for maximum conductivity and corrosion resistance
- Heavy duty terminals used for joining a wide range of copper conductors to equipment pads or bus bars
- Bronze screw and pressure bar provide uniform clamping pressure on conductor
- Round tongue accommodates full washer clearance and adjustable lug orientation
- Annular serrations in conductor grooves provide improved mechanical performance
- Inspection hole allows for visual confirmation of proper cable insertion
- Hex head screws can be furnished on request by adding suffix “-HH” to catalog number*
- For tin plating, suffix catalog number with “-TN”



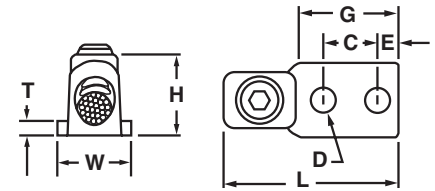
CATALOG NUMBER	CONDUCTOR RANGE	APPROXIMATE DIMENSIONS (IN.)					MTG. BOLT SIZE	HEX SIZE
		T	W	D (DIA.)	H	L		
VL-22003	8 Sol. - 6 Str.	.16	1.00	.41	.63	1.50	3/8	5/32
VL-22004		.16	1.13	.53	.63	1.63	1/2	
VL-22008	4 Sol. - 1 Str.	.19	.75	.34	.88	1.56	5/16	3/16
VL-22009		.19	1.00	.41	.88	1.81	3/8	
VL-22010		.19	1.00	.53	.88	1.81	1/2	
VL-22014	2 Str. - 2/0 Str.	.25	1.00	.41	1.00	1.88	3/8	1/4
VL-22015		.25	1.00	.53	1.00	1.88	1/2	
VL-22017		.25	1.50	.78	1.00	2.63	3/4	
VL-22018		.25	2.00	.91	1.00	2.88	7/8	
VL-22023	1/0 Str. - 4/0 Str.	.19	1.00	.53	1.25	2.25	1/2	1/4
VL-22025		.31	1.50	.78	1.13	2.63	3/4	
VL-22026		.31	2.00	.91	1.25	3.13	7/8	
VL-22029	3/0 Str. - 300 kcmil	.34	1.50	.53	1.38	2.75	1/2	3/8
VL-22031		.34	1.50	.78	1.38	2.75	3/4	
VL-22032		.34	2.00	.91	1.38	3.25	7/8	
VL-22035	300 - 500 kcmil	.38	1.50	.53	1.81	2.88	1/2	3/8
VL-22038		.38	2.00	.91	1.81	3.38	7/8	
VL-22043	500 - 800 kcmil	.44	1.50	.53	1.81	3.00	1/2	3/8
VL-22046		.44	2.00	.91	1.81	3.50	7/8	
VL-22049		.44	2.50	1.19	1.81	4.00	1	
VL-22053	700 - 1000 kcmil	.47	1.50	.53	2.06	3.25	1/2	3/8

*Note: Catalog numbers with suffix “-HH” are not UL listed

Bronze Vi-Tite Terminal Lugs - Two Hole Tongue Type VL

For use with one copper conductor

- Manufactured from high strength copper alloy for maximum conductivity and corrosion resistance
- Heavy duty terminals used for joining a wide range of copper conductors to equipment pads or bus bars
- Bronze screw and pressure bar provide uniform clamping pressure on conductor
- Two hole mounting pads allow for maximum surface contact in heavy duty applications
- Annular serrations in conductor grooves provide improved mechanical performance
- Inspection hole allows for visual confirmation of proper cable insertion
- Hex head screws can be furnished on request by adding suffix “-HH” to catalog number*
- For tin plating, suffix catalog number with “-TN”



CATALOG NUMBER	CONDUCTOR RANGE	APPROXIMATE DIMENSIONS (IN.)								MTG. BOLT SIZE	HEX SIZE
		T	W	C	D (DIA.)	E	G	H	L		
VL-21761	8 Sol. - 6 Str.	.13	.50	.63	.28	.25	1.44	.63	2.00	1/4	5/32
VL-21763	4 Sol. - 1 Str.	.22	.63	.75	.28	.28	1.44	.88	2.25	1/4	3/16
VL-21764		.22	.75	1.00	.44	.44	2.13	.88	3.00	3/8	
VL-21765		.22	.75	.75	.31	.41	1.63	.88	2.50	1/4	
VL-21766		.22	1.00	1.00	.44	.53	2.13	.88	3.00	3/8	
VL-21767	2 Str. - 2/0 Str.	.25	.81	1.00	.41	.44	2.13	1.00	3.00	3/8	1/4
VL-21768		.25	1.00	1.75	.56	.56	3.00	1.00	3.88	1/2	
VL-21769		.25	1.00	.75	.31	.41	1.63	1.00	2.50	1/4	
VL-21770		.25	1.00	1.00	.44	.53	2.13	1.00	3.00	3/8	
VL-21773/76	1/0 Str. - 4/0 Str.	.22	1.00	1.00	.44	.44	2.13	1.25	3.25	3/8	1/4
VL-21774		.28	1.00	1.75	.56	.56	3.00	1.25	4.13	1/2	
VL-21775		.19	1.00	.75	.31	.41	1.63	1.25	2.75	1/4	
VL-21779	3/0 Str. - 300 kcmil	.31	1.19	1.00	.41	.44	2.13	1.38	3.38	3/8	3/8
VL-21780		.31	1.19	1.75	.56	.56	3.00	1.38	4.25	1/2	
VL-21781		.31	1.50	.75	.44	.41	1.63	1.38	2.88	3/8	
VL-21782		.31	1.50	1.00	.44	.53	2.13	1.38	3.38	3/8	
VL-21784	300 - 500 kcmil	.38	1.38	1.00	.41	.44	2.13	1.81	3.50	3/8	3/8
VL-21785		.38	1.38	1.75	.56	.56	3.50	1.81	4.75	1/2	
VL-21786		.38	1.50	.75	.44	.41	1.63	1.81	3.00	3/8	
VL-21787		.38	1.50	1.00	.44	.53	2.13	1.81	3.50	3/8	
VL-21789	500 - 800 kcmil	.41	1.75	1.50	.56	.56	3.00	1.81	4.50	1/2	3/8
VL-21790		.41	1.75	1.75	.56	.56	3.50	1.81	5.00	1/2	
VL-21791		.41	1.75	1.00	.44	.53	2.19	1.81	3.75	3/8	
VL-21794	700 - 1000 kcmil	.44	2.00	1.50	.56	.56	3.00	2.06	4.75	1/2	3/8
VL-21795		.44	2.00	1.75	.56	.63	3.50	2.06	5.25	1/2	
VL-21796		.44	2.00	1.00	.44	.53	2.19	2.06	4.00	3/8	

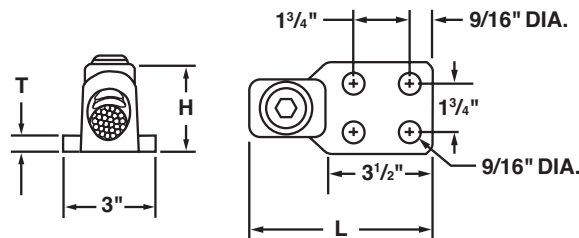
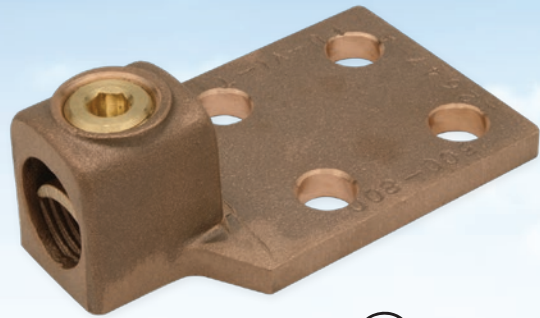
*Note: Catalog numbers with suffix “-HH” are not UL listed

Bronze Vi-Tite Terminal Lugs - Four Hole Tongue

Type VL

For use with one copper conductor

- Manufactured from high strength copper alloy for maximum conductivity and corrosion resistance
- Heavy duty terminals used for joining a wide range of copper conductors to equipment pads or bus bars
- Bronze screw and pressure bar provide uniform clamping pressure on conductor
- Four hole mounting pads allow for maximum surface contact in heavy duty applications
- Annular serrations in conductor grooves provide improved mechanical performance
- Inspection hole allows for visual confirmation of proper cable insertion
- Hex head screws can be furnished on request by adding suffix "-HH" to catalog number*
- For tin plating, suffix catalog number with "-TN"



CATALOG NUMBER	CONDUCTOR RANGE	APPROXIMATE DIMENSIONS (IN.)			MTG. BOLT SIZE	HEX SIZE
		T	H	L		
VL-21917	3/0 Str. - 300 kcmil	.31	1.25	4.25	1/2	3/8
VL-21919	300 - 500 kcmil	.38	1.81	4.75		
VL-21921	500 - 800 kcmil	.41	1.50	5.00		
VL-21925	700 - 1000 kcmil	.44	1.75	5.25		

*Note: Catalog numbers with suffix "-HH" are not UL listed